



PUBLIC SAFETY POLICY
In effect:
Authorized by:

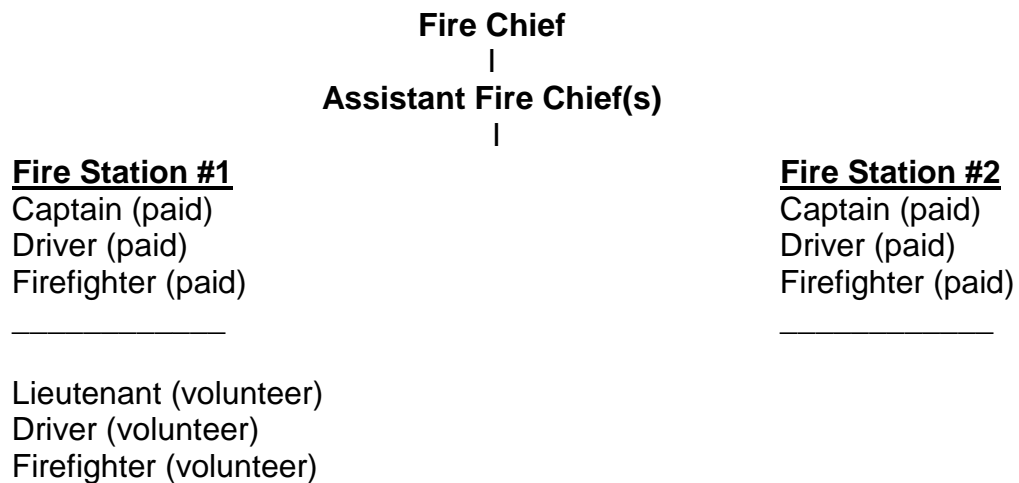
PS-1 Sam Bass Fire Department Rank Structure

I. Purpose

It is the purpose of Sam Bass Fire Department to provide for the public safety of the citizens and visitors of the SBFD area. We will do this through an organized and structured chain of command so that responses to emergency situations will be as efficient as possible.

II. Policy

It is the policy of Sam Bass Fire Department that its responders will be organized by the following rank structure.



- A. Qualifications for each of the listed positions referenced in the SBFD rank structure can be found in Policy PT-1.
- B. Should more than one SBFD Lieutenant arrive at the station to staff a response unit, the first one to arrive will be in charge for the remainder of the time that unit is to be staffed. If the first Lieutenant wants to defer to the



PS-1

second arriving Lieutenant, he or she may do so but only after a full crew (3 members) are assembled and all qualifications are covered for the crew.

- C. All Lieutenants report to the Station 2 Captain for all non-emergency business matters or to the incident commander, if he or she is not the incident commander, for all emergency situations. For the department as a whole, the person working in the Station 1 Captain position will assume the Shift Captain for all urgent non-emergency business after business hours and on weekends.
- D. Chain of Command on the scene of an emergency will conform to adopted Incident Command procedures (NIMS) regardless of whether the first arriving member is volunteer or paid. A SBFD Lieutenant may respond directly to the scene of an emergency as long as that officer has a radio to report that response to other responders and the crew gathering at Station 1.